



Dreaming Forward

Care that Meets the Realities
of People's Lives



South Riverdale
COMMUNITY
HEALTH CENTRE

Inside our 2025-26 Annual Report

- > Strengthening the systems our community relies on
- > Connecting care to the realities of people's lives
- > Supporting the people who care for our community

CEO and Board Chair Message

A community built on care

From its earliest days, South Riverdale Community Health Centre (SRCHC) has been guided by a simple but powerful belief: health care must reflect the realities of people's lives. In practice, that means recognizing that health isn't only about treatment — it's also about housing, food, belonging, safety, and connection. This approach has brought people together over 50 years — staff, volunteers, partners, and community members — all working toward care that extends beyond SRCHC's walls into the realities people face every day.

We are deeply grateful to the people who make our shared commitment possible. Our staff bring compassion, expertise, and dedication to every interaction. Our Board provides thoughtful leadership and stewardship. And our partners strengthen the services and supports our community relies on. Together, they help ensure that everyone who walks through our doors feels welcomed, seen, and supported in the context of their lives.

Building on this foundation, we continue to respond to the community's changing needs with care, resolve, and compassion. This year also brought significant challenges, including the provincial decision to end funding for supervised consumption and treatment services that will result in the closure of our Moss Park site. We know this change will have a profound impact on people who rely on these services for life-saving care.

Over the past year, we also continued to expand our services through initiatives including a mobile health clinic, the East Toronto HART Hub, primary care

expansion, a new foot care program, and a refreshed website. Together with our new strategic plan, these initiatives reflect our dedication to responsive, community-based care and our unwavering commitment to advocating for and championing the people and communities we serve.

As we celebrate our 50th anniversary milestone, we honour the community that has shaped our work and the people who carry it forward every day. Together, we are Dreaming Forward — building on 50 years of care that meets each person where they are with compassion, and shaping a future of inclusive, responsive care for the next 50 years.



Shannon Wiens
Chief Executive Officer



Rebecca Ho
Board Chair



Our Board of Directors

Strong leadership helps guide our path forward. We thank our Board of Directors for their stewardship, insight, and commitment to our community.

Bella Bereket
Philip Berger
Matthew Yun-Chun Cheng
Jonathan Fetros
Arman Hamidian
Nisha Hariharan

Emily Hill
Rebecca Ho (Chair)
Riannon John
Sylvia Pivko
Anne Simard
Edward Speicher



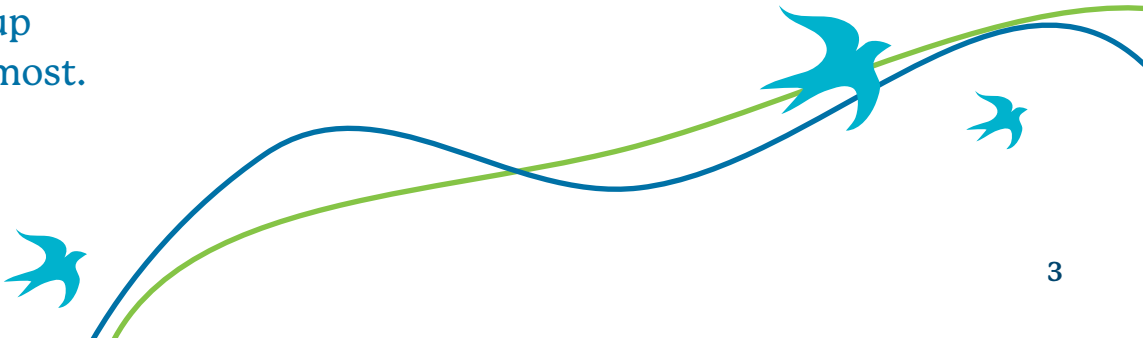
Fifty years ago, we opened our doors for the first time. Four people walked through them that day. Today, thousands do each year. From a small space on Pape Avenue to now serving people across East Toronto — many with complex health needs — we've grown alongside our community, showing up where we are needed most.

Our story

In 1976, a group of neighbours came together around a simple idea: everyone deserves access to care that meets them where they are. With just three staff, South Riverdale Community Health Centre opened its doors and began building something new — care shaped by community and connection.

Over the years, that care has expanded in step with the people we serve. We've supported those who face barriers in traditional systems, provided comprehensive primary health care, and created services for newcomers, seniors, and people living with chronic conditions.

From those first clients to everyone we serve today, our story is one of listening, learning, and growing — together





Moments that shaped us

1976

We open our doors on Pape Avenue, welcoming our first four clients.

1982

We lead Canada's largest-ever lead screening, testing 2,300 children and adults.

1998

Our new home at Queen and Heward becomes the heart of our work — where care and community meet.

2002

Launch of programs for breast health, diabetes education, and early years support.

2007

Our COUNTERfit program earns international recognition for leadership in harm reduction.

2012

In partnership with local groups, we open the South Riverdale Good Food Market.

2015

We're honoured with the Community Engagement Award from the Association of Ontario Health Centres.

2017

We integrate with Call-A-Service, expanding our programming at Harmony Hall to include seniors' transportation and active living initiatives.

2019

The MATCH Midwifery program begins, supporting families through pregnancy and postpartum.

2020

We open the Harmony Community Food Centre to improve access to healthy food.

2020-2023

We stay open through the pandemic, expanding virtual care and providing essential supports, including masks and vaccinations.

2026

We continue to grow alongside our community, evolving and innovating programs and services to meet changing needs.



Looking ahead

For 50 years, South Riverdale Community Health Centre has grown by listening — to our community, our partners, and each other. That same spirit guides what comes next. As we look ahead, we remain committed to care that sees the whole person — and to building a healthier, more connected community, together.

Our Impact Today

Care that reaches thousands of lives

Every year, thousands of people come to South Riverdale Community Health Centre — for care, support, connection, and community. Behind every number is a story of someone whose life is touched by our wholistic approach: care that reflects the realities of their lives, and that often reaches beyond to their families and communities too.

By the numbers

16,786 people served last year

– each one with unique needs, strengths, and goals.

64%

of clients from diverse racial and cultural backgrounds

– reflecting the rich communities we serve.

62%

of clients living on less than \$40,000 annually

– highlighting the critical role of accessible care.

175,193

total visits (in-person and virtual)

– connecting people to support when and where they need it.

17,513

visits for primary care

– ensuring comprehensive, ongoing health support.

10,331

visits for chronic disease management

– helping people live well with long-term conditions.

109,230

visits for mental health and substance use support

– addressing the whole person, not just symptoms.

24,030

visits for wellness programs and community services

– supporting learning and connection.

171

community programs offered

– designed with partners to meet evolving local needs.

39,642

participation in group programs

– fostering belonging and peer support.

Every number represents a person whose life is touched, a story of resilience and care, and the partnerships that make it possible.



Our Model of Care

Why Community Health Centres Matter

Health care doesn't happen in isolation.

At SRCHC, we know that health is shaped by the realities of everyday life — housing, food security, income, safety, culture, and connection. That's why our care model brings together high-quality primary care, diverse social supports, and engaging community programs — so people get the care they need, in ways that make sense for their lives, in spaces where they feel, “I matter.”

This approach also strengthens the broader health system. As a partner, advocate, and innovator, South Riverdale Community Health Centre helps ensure care is coordinated, accessible, and responsive to the people who need it most.

Our new strategic plan builds on this foundation, guiding how we connect care with community and collaborate with partners to meet growing needs.

Dreaming Forward: Our Strategic Plan

For 50 years, South Riverdale Community Health Centre has grown alongside its community. Today, new challenges — housing instability, rising living costs, and increasing demand for care — require us to dream forward with fresh approaches.

At the centre of our work is our vision of empowered, healthy and thriving communities where everyone belongs. Our new strategic plan is grounded in our values: of commitment to reconciliation and relationship, health equity and social justice, meaningful engagement, a holistic, person-centred approach and evidence- and values-informed practice.


Culture of belonging and growth

Unwavering champion for equity

Improve the wellbeing of equity-deserving people through tireless advocacy and an ecosystem of connected, responsive care

Nimble, connected system

Care without barriers



Guided by these values,
our new strategic plan outlines
a clear path forward through
four key strategies:

STRATEGY 1

Nimble, Connected System

We are helping shape a more connected, responsive system of equity-driven care across East Toronto. Through deep collaboration with partners, we are weaving together an ecosystem of support — from primary care to mental health, housing supports, and social connection — so people can access the full spectrum of services they need to thrive.

STRATEGY 2

Care without Barriers

Care should feel seamless, wherever it begins. By linking our sites, expanding outreach, and aligning our programs, we are creating a consistent experience of welcoming, barrier-free, wholistic care. From mobile services to programs for newcomers, seniors, and those facing complex mental health and substance use challenges, we meet people where they are — and walk alongside them.

STRATEGY 3


Culture of Belonging and Growth

The work we do starts with people. We are nurturing a culture of equity, wellbeing, belonging and growth — one that sustains and celebrates those who give so much of themselves. By investing in our staff, volunteers, and partners, we are strengthening the heart of our organization.

STRATEGY 4

Unwavering Champion for Equity

We are listening, learning, and leading. Grounded in community insight and evidence, we are advancing equity-driven care and deepening our role as advocates, educators, and allies — sharing what we learn to help build a more just and compassionate system for all.





DREAMING FORWARD

starts with what we've already set in motion — here are some highlights from the past year.

Stronger Care, Together

Care doesn't happen in one place — and it doesn't happen alone.

At South Riverdale Community Health Centre, collaboration is at the heart of how we work. Through 32 service agreements with interdisciplinary partners across the health and social service systems, we help make care more connected, accessible, and responsive to people's lives. Together, we're building a supportive network where people don't have to navigate challenges on their own — and where individualized care is easier to find, faster to access, and shaped around the whole person.

One example of this work is the East Toronto Homeless and Addiction Recovery Treatment (HART) Hub. This past year, we marked its first anniversary — a milestone in our ongoing work to expand access to care.



Cindy Reddick *East Toronto HART Hub Client*

“ This place saved my life. I came here after I left a really bad relationship—he knocked out my teeth. I came looking for help, and I got it.

I started coming here three, four times a week. I was coming off crack at the time — not heroin, because I've been clean off heroin for 13 years — and I've stayed clean since then.

This place has helped build me up and keep me built up, not break me down. I tell them how I'm doing, and they're there for me. They know me now. This place is number one in my books.

I remember one time one of the counsellors called me at 11 o'clock when I didn't even feel like getting out of bed. But I did. Because of her and this place.

I'm not used to being around people like this, but they are amazing. Even the chiroprapist is amazing. They're phenomenal. I'm learning how to talk to others and not feel trapped in something anymore. ”



We co-lead this initiative with St. Michael's Homes, working alongside many partners across the community.

The East Toronto HART Hub is a welcoming space where people can connect to primary health care, social supports, and housing services. Whether someone needs a pathway to housing or is ready to consider options for recovery and treatment, they are met with respect and without judgment or bias.

We provide a comfortable and welcoming space where people can access a wide range of supports, including primary care, mental health services and treatment, counselling, and connections to housing support. Case managers work alongside clients to help them navigate services, coordinate care, and build strong, trusted relationships over time.

The East Toronto HART Hub brings together 13 partner organizations, creating a more seamless experience of care. Instead of being referred from service to service, people can access what they need in a coordinated and supportive environment.

East Toronto HART Hub partners

- 2-Spirited People of the 1st Nations
- Alpha House Recovery Community
- Anishnawbe Health Toronto
- Comprehensive Treatment Clinic
- Cota Health
- Fontbonne Ministries
- Gerstein Crisis Centre
- Michael Garron Hospital
- TNG Community Services
- The Neighbourhood Organization
- The Salvation Army
- WoodGreen Community Services



This collaborative approach is already making a difference.

Last year, **1,243** people connected with the East Toronto HART Hub, including 37 who secured housing — an important foundation for stability, health, and recovery.

Moss Park CTS

In 2025-26, there were:

193 people accessed low-barrier primary care

→ Over 190 people connected to a nurse, many for the first time in a long while.

467 complex wound treatments

→ Almost 470 wound care sessions for serious wounds that could have led to infection or hospitalization.

446 non-fatal overdoses responded

→ Staff saved 446 lives by responding to overdoses on site.

2,875 social service encounters

→ Over 2,800 encounters where people got help with housing, food, or other essential supports.

300 addiction treatment sessions

→ 300 sessions supporting people in their recovery journeys, offering treatment where it's needed most.

2,762 mental health supports

→ Nearly 2,800 encounters providing mental health support and connection for people facing isolation and trauma.

5,267 meals provided

→ Over 5,200 meals served, helping to meet basic need.



Moss Park Consumption and Treatment Site (2018–2026)

Since 2018, Moss Park CTS has been a trusted space for thousands of people. The program offers low-barrier, coordinated care, including primary health services, mental health programming and services, substance use treatment, and social supports.

By removing barriers to access, the site plays a critical role in building trusting relationships with the people we serve — often beginning with the simple, vital goal of keeping them in a safer place, connected to community and, even more importantly, alive in the tragic face of an ever-increasingly perilous toxic drug crisis. These relationships are often long-term and become a foundation for supporting individuals, when they're ready, to consider options for treatment, recovery, housing and even employment.

In March of 2026, staff and service-users suddenly learned that public funding for Moss Park CTS would end on June 13th, 2026, and the supervised consumption site would be required to close at that time.

Moss Park CTS is healthcare and, over the years, has saved thousands of lives. Without it, people will be exposed to disastrous and life-threatening consequences, underscoring the vital role our experienced and highly skilled staff has played in keeping the city's most equity-deserving Ontarians connected to life-saving care and other essential programs and services.

Care Is Most Effective When It Fits into People's Everyday Lives



At SRCHC, we design services around the realities people face — whether that's limited transportation, language barriers, isolation, or the rising cost of living. From mobile care to community-based programs, we meet people where they are, making it easier to access support in ways that feel welcoming, relevant, and connected.

Across our programs, this approach removes barriers, strengthens trust, and helps people stay connected to care over time.

Mobile Health Clinic

One example is our Mobile Health Clinic, launched this past year to bring care directly into neighbourhoods across East Toronto.

The clinic delivers primary care, vaccinations, health screenings, and health promotion services in community settings — reaching people who may face barriers to accessing traditional clinics, including transportation challenges or unstable housing.

Working alongside community partners such as Red Door Shelter and WoodGreen Community Services, the mobile team meets people in familiar, trusted spaces. This approach not only improves access, but also helps build relationships and connect people to ongoing care.

Meeting People Where They Are

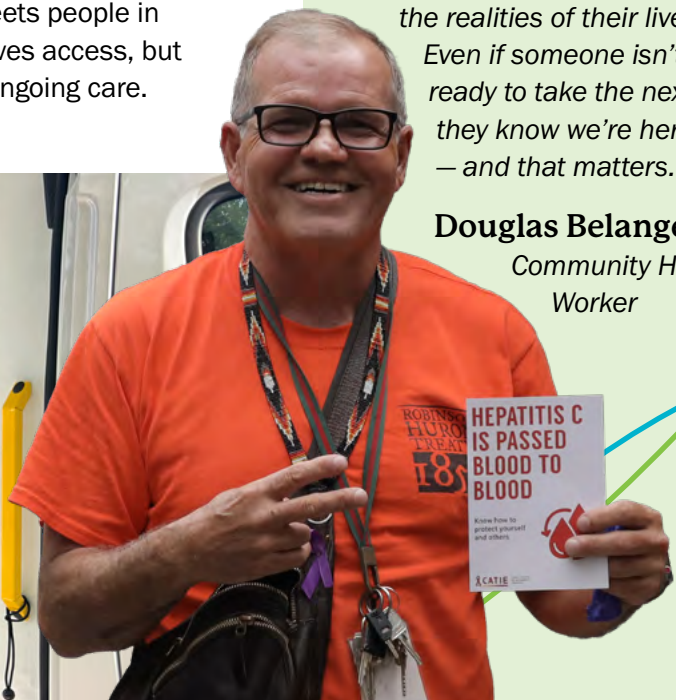
“ Having the opportunity to do outreach like this is everything. With the mobile clinic, we can pull up on a street, park, and connect with people right where they are.

I've been out in the van over 40 times now through the Toronto Community Hep C Program, and what stands out is how much it changes the interaction. Being able to invite someone into a warm space, offer a snack or even just a pair of socks, have a real conversation, offer Hep C testing, and connect them to whatever they need at that moment — it makes a difference.

Most people we meet are grateful that we come to them. The van creates a space where people feel more at ease, and the honesty that comes out of those conversations is incredible. When I share that I've been through the Hep C Program myself, you can feel a shift — people open up.

For me, this work is meaningful. It doesn't feel like work. It's about supporting people without judgment and meeting them in the realities of their lives. Even if someone isn't ready to take the next step, they know we're here — and that matters. ”

Douglas Belanger
Community Health Worker





Expanding Primary Care

Health Access Taylor-Massey (HATM) is a neighbourhood care hub in Crescent Town, where South Riverdale Community Health Centre is a proud partner. With all of their partners, HATM is increasing access to family doctors, nurses, mental health care, and community services in one accessible location.

In Crescent Town and the wider Taylor-Massey community, many people are building new lives while navigating real barriers – language, income, housing pressures, and the challenge of finding primary care. For some, that has meant waiting too long to seek help or turning to emergency departments when things become urgent.

In 2025, HATM received primary care expansion funding to attach individuals to primary care. Through this investment, SRCHC was able to hire additional doctors, nurse practitioners, and a health promoter, strengthening local capacity and expanding access to care for the community.

Together, HATM and its partners, are working toward a more sustainable, community-centred model of care. More than a health space, HATM is a place for relational community — bringing care into the heart of the neighbourhood and strengthening connections between people and the services they need most.





Foot Care

By the numbers:

97 clients served by the new foot care program with shoes/boots fitted and provided

36% of clients were underhoused or experiencing homelessness

93% of clients have an annual household income of less than \$40,000

Foot Care

This year, we expanded our foot care program to better support people in our community who are experiencing homelessness — many of whom are also living with diabetes, substance use, and mental health challenges.

Foot health is critical to overall well-being. People living with diabetes can experience reduced feeling in their feet and slower healing due to poor circulation, meaning small cuts or pressure points can go unnoticed and quickly become serious. For those experiencing homelessness, long days on their feet, damp conditions, and worn or ill-fitting shoes greatly increase the risk of wounds, infection, and even limb loss.

Foot screening has long been part of our routine diabetes care. Our teams work closely with each person to assess risk and connect them to the right supports, including chiropody and wound care, helping to ensure timely and appropriate care. This work is informed by our Foot Health Work Group — a cross-organizational team of chiropodists, nurses, and the coordinator of information management. Their efforts are aligned with the Registered Nurses Association of Ontario’s Best Practice Spotlight Organization program, ensuring care is consistently grounded in evidence-based best practices.

This year, we strengthened our focus on prevention by improving access to proper footwear. With support from the Downtown East Ontario Health Team and a partnership with Mark’s, people get a “prescription” that gives them access to free, well-fitted shoes and boots that keep their feet warm and dry — a simple but important way to reduce risk. Each person is assessed for fit, guided in their selection, and supported through ordering and delivery when needed.

For many of our clients, this small intervention makes a meaningful difference — helping preserve their mobility and making their daily life a little easier.

At SRCHC’s Moss Park Consumption and Treatment Service site, staff supported high-risk community members in accessing properly fitted winter footwear — sometimes the first new pair they have had in years. Beyond the practical benefits, the impact was deeply felt: clients describe feeling cared for and more able to look after their health.

One person put on their new boots and danced.





MATCH
MIDWIFERY & TORONTO
COMMUNITY HEALTH



There were over
1,000
clinic appointments
at the Early
Pregnancy Clinic
in 2025-26.



MATCH Program: Midwifery and Early Pregnancy Complications and Loss Care

The MATCH program (Midwifery and Toronto Community Health) continues to expand what full-spectrum perinatal care can look like.

In partnership with Michael Garron Hospital (MGH), the MATCH team staffs and leads care at the Early Pregnancy Clinic — an outpatient clinic at the hospital supporting people experiencing early pregnancy loss or complications.

Most pregnancy losses occur before people are connected to a perinatal care provider, such as an obstetrician, family doctor, or midwife. That leaves many people, including in our East Toronto community, seeking care at the emergency department for miscarriage – which we know from patients can be a very difficult location to receive this care.

Through staffing the Early Pregnancy Clinic at MGH, the MATCH team is working to shift this care experience by delivering highly specialized, compassionate care to patients facing complications in early pregnancy in a dedicated, welcoming clinic space for those navigating loss and uncertainty.

Patients seen by the midwives in the Early Pregnancy Clinic receive full clinical care as well as mental health support and referrals. Consultation with the obstetrics team is available for more complex cases. The team has expanded access to the clinic through extended hours and telephone-based support, as well as new pathway for people without OHIP to access the clinic's care.

This highly successful care model shows what's possible when hospital and community care come together — centering patients, improving access, closing gaps, and ensuring people are supported with dignity at every stage of their experience.





Three fun takeaways from our Seniors' Active Living Program

Mindfulness Tip: 5-4-3-2-1 Grounding



Try this simple grounding exercise to reduce stress and return to the present moment. Notice **5 things you can see, 4 you can touch, 3 you can hear, 2 you can smell, and 1 you can taste.**

A quick way to support calm, focus, and emotional well-being — practised together in our Mindfulness Program.

Chinese Red Tea Eggs



A traditional savoury snack enjoyed in many Asian cultures, tea eggs are gently simmered in tea, soy sauce, and warm spices, creating a rich flavour and marbled shell.

Ingredients:

Eggs, black/red tea, soy sauce, star anise, cinnamon stick, water

How to make:

- Boil eggs and lightly crack the shells
- Simmer in tea, soy sauce, and spices for 1-2 hours
- Let sit longer for deeper flavour

Healthy Aging Tip



Adults aged 55+ are encouraged to aim for **150 minutes of moderate activity each week** to support strength, balance, mobility, and overall well-being.

A gentle fitness class, yoga, tai chi, Zumba Gold, line dancing, and walking are great ways to stay active, maintain independence, and reduce the risk of falls.

Seniors' Active Living

Our Seniors' Active Living Program helps older adults stay healthy, feel connected, and live with independence, all while celebrating their unique stories and cultural backgrounds. Our programs are also co-created with participants, so they truly reflect the needs, traditions, and preferences of the seniors we serve.

Activities are offered in multiple languages — including Bengali, Cantonese, English, Mandarin, and Tamil — so people can fully participate in ways that feel familiar, welcoming, and comfortable.

Through fitness classes, wellness programs, arts, educational workshops, congregate dining programs, and social events, older adults stay active and form meaningful connections with peers who share their language, culture, and life experiences. From gentle exercise and fall-prevention activities to mindfulness programs, community choirs, and cultural celebrations, these programs nurture both physical and mental well-being, helping seniors feel seen, valued, and part of a community.

2025-26 Highlights:

27,400
participant
attendances

60
programs offered

1,201
group sessions
delivered



Sultan Mahmud

Volunteer at the Harmony Community Food Program

Sultan is a senior and dedicated volunteer at the Harmony Community Food Centre, where he is a familiar and welcoming presence. He supports a range of community food programming, including the Good Food Market, seed-packing events in partnership with the Toronto Seed Library, garden activities, and community meals.

For Sultan, the program is not just a place to volunteer — it is a place to contribute, connect, and grow alongside others.

When asked about his hopes for the future, Sultan shared a simple but powerful vision for the community: “I dream of more programs for seniors,” and “My dream is to be involved in many programs in the future.” He also expressed a broader hope that South Riverdale Community Health continues to grow and expand its impact.

Sultan’s story reflects what many participants experience through our community food program: a space where people are not only supported, but also actively shaping the future of their community.

Harmony Community Food Centre

Our Harmony Community Food Centre offers more than just food — it offers connection, dignity, and belonging. Through shared meals, cooking programs, gardens, and an affordable market, community members come together to learn, share, grow, advocate for change, and support one another. It is a welcoming space where people can build skills, celebrate culture, and strengthen their sense of community.

Participants don’t just access food — they build relationships, strengthen social connections, and meaningfully contribute to our programs.

Feedback from a recent Right To Food participant survey:

- **92%** of respondents say the program is an important source of healthy food
- **75%** report a strong sense of belonging
- **89%** have made new friends
- **69%** report improved health and well-being
- **70%** are eating a greater variety of foods
- **20%** of participants also volunteer

These experiences are supported by the scale and reach of the program’s day-to-day work. Over the past year, the Harmony Community Food Centre provided more than 5,400 nutritious meals and 7,600 culturally appropriate meals to seniors from Tamil, Bengali, and Chinese communities. In addition, over 270 participants took part in hands-on cooking and food skills workshops, and more than 260 families and individuals received take-home cooking kits, including recipes and essential food supplies.

All of these programs reflect what it means at SRCHC to see the whole person — care that responds to real needs, in real places, and supports people in moving forward with dignity and connection.



Care Starts With Our People

At SRCHC, the relationships between staff, volunteers, partners, and community members are at the heart of everything we do. When the people providing care feel supported, respected, and included, it shapes every interaction — and every experience of care.

That's why we are investing in a workplace culture rooted in equity, learning, and belonging. This work is ongoing, and it starts with listening.



Building a more inclusive organization

Over the past year, we continued to advance the work of our Inclusion, Diversity, Equity, Access, and Anti-Racism (IDEAA) Action Group, reinforcing our commitment to living our values every day.

Co-chaired by our CEO and a staff member, the group brings together voices from across the organization to help guide meaningful change. Its focus is both practical and long-term: understanding staff experiences, identifying gaps, and taking action to build a more inclusive and equitable workplace.

The group is helping to:

- Gather staff feedback and lived experiences
- Review policies, programs, and practices through an equity lens
- Recommend changes that support inclusion and accountability
- Build staff capacity through training and learning opportunities
- Strengthen how we communicate and embed these practices across the organization

Just as importantly, it creates space for open, honest dialogue — so our team feels safe to share their perspectives and help shape the organization's future.

Advancing health equity in care and community

Building on this foundation of equity and inclusion, we strengthened our approach to health equity through the Health Equity Committee, which brings together staff and leadership to improve how we collect, understand, and use data to support better care and address inequities experienced by the communities we serve.

A key focus of the committee is the ongoing implementation of the Health Equity Questionnaire, including improving participation, strengthening data quality, and ensuring findings are meaningfully translated into action.

These efforts have helped increase our collection rate from 62% in 2019 to 81% last year.

The committee is also improving consistency in data collection across teams, while developing tools and training to help staff use health equity data in their daily work. This work is guided by a commitment to data sovereignty, privacy, and respectful stewardship — ensuring the information entrusted to us is used in service of dignity, equity, and better care for our community.



Listening, learning, and taking action

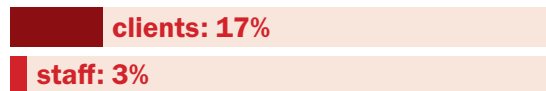
We also conducted a staff census — an important step in understanding who we are as an organization, and how that compares to the community we serve.

The findings highlight both strengths and opportunities:

66% of clients identify as Black, Indigenous, or People of Colour, compared to **50%** of staff



17% of clients identify as Black, compared to **3%** of staff



48% of clients identify as living with a disability, compared to **30%** of staff



36% of clients were born outside Canada, compared to **45%** of staff



These insights help us better understand where representation gaps exist — and where we need to focus our efforts.

This is not a one-time exercise. The survey is conducted annually, with action plans developed to guide ongoing progress.

Alongside this, staff are engaging in training to deepen cultural humility and strengthen inclusive care. This includes learnings on anti-Black racism, Indigenous cultural safety, and gender diversity — helping ensure that care is not only accessible, but respectful, informed, and responsive.

As part of this commitment to learning and development, we also support students and interns, helping to train and mentor the next generation of community health care providers.

Learning together, with community



Our commitment to equity extends beyond our walls.

Throughout the year, we partnered with community organizations to host and participate in events that create space for learning, reflection, and celebration — marking occasions such as Pride, Black History Month, and Truth and Reconciliation.

These moments are opportunities to listen, build relationships, and deepen our understanding of the communities we serve — while reinforcing our shared commitment to equity and inclusion.



National Day for Truth and Reconciliation

This year, we had the privilege of hosting a Trust and Reconciliation Community Event in partnership with the Ralph Thornton Community Centre — a gathering rooted in relationship, learning, and shared reflection.

From the moment the event began with an Indigenous drumming session, there was a sense of grounding and connection that carried throughout the day. An Indigenous Elder also led with a smudging ceremony, creating a space of welcome, respect, and intention for all who attended.

Throughout the event, Indigenous Elders, knowledge keepers, and vendors generously shared teachings, stories, and creative works. A Sweetgrass Infusion workshop offered participants the opportunity to learn about sweetgrass as a medicine, including its cultural significance and the importance of accessible, smoke-free alternatives in spaces where traditional practices may not always be possible. Together, participants prepared sweetgrass infusions that can be strained into a gentle mist — allowing people to carry their medicine with them in daily life.

The day also included a presentation from staff on pre-colonial landscapes and reconciliation, exploring how colonization has shaped food systems. Across these moments of learning, approximately 110 people from the community attended—including many families and young children, and several people entering our doors for the first time.

What stood out most was the openness in the room. Conversations unfolded naturally between community members, Elders, knowledge keepers, and staff — often around topics that can be difficult, but are necessary for truth and reconciliation.

For Amanda Spanish,

a community member and beadwork artist, participating in the event was deeply meaningful:

“ Being there made me feel really good — like I was part of something important. I got to share my beading, connect with people I hadn't seen in years, and meet new people too. For me, it was about helping people learn more about Truth and Reconciliation and honouring the day by sharing a part of my culture.



The event was a meaningful step in strengthening relationships with community and continuing to create space for learning, reflection, and honest dialogue — work that remains ongoing and deeply important.

Caring for the people who care

Supporting our team also means creating space for rest, connection, and well-being.

Throughout the year, we offer wellness programs and staff events designed to support both individual and collective well-being. These moments — whether focused on mental health, stress management, or simply coming together — help create a sense of connection in a fast-paced and often demanding environment.

From learning sessions and wellness activities to informal gatherings, these initiatives give staff time to recharge, reflect, and build relationships with one another.

This work is still evolving. As we continue to listen to staff, we are exploring new ways to support well-being—recognizing that caring for our team is essential to sustaining the care we provide to our community.



Looking ahead

This work is ongoing — and it matters.

By investing in our people, we are strengthening the foundation of our care. We are building a workplace where staff feel supported, valued, and able to thrive — and where clients experience care that reflects who they are and what they need.

Because when our people are supported, our community is too.



Dreaming Forward

The needs of our community continue to evolve.

Rising living costs, housing challenges, and growing demand for care are changing how people access services — and what they need to stay healthy and connected. At South Riverdale Community Health Centre, we are responding by adapting, strengthening partnerships, and finding new ways to reach people where they are.

This year, that work has taken shape in many ways: a new strategic plan to guide our path forward, expanded programs designed around real-life needs, ongoing collaboration with partners across East Toronto, and the launch of a new website that makes it easier for people to find services, get information, and connect to care.

As we mark 50 years of service, we remain grounded in the belief that started it all: care that meets the realities of people's lives.

Together with our community, staff, Board of Directors, partners, and supporters, we are Dreaming Forward — building on 50 years of care and shaping a future where everyone can access the support they need to live well.



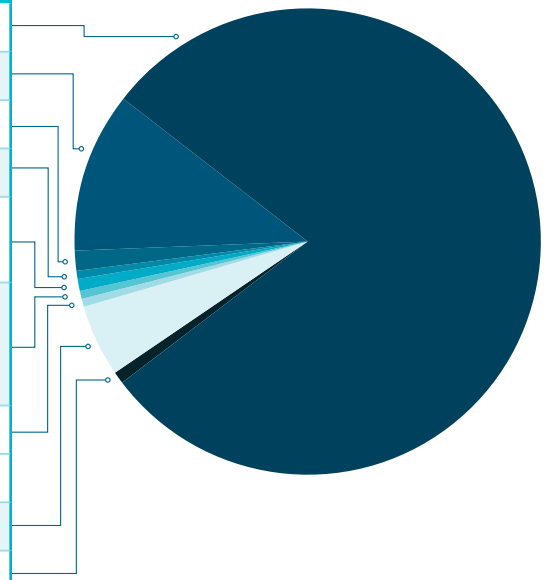
Our Financials

Operating Revenue & Expenses

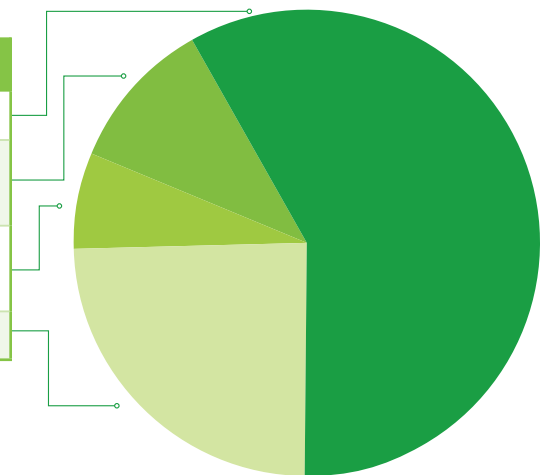
(Period ended March 31, 2026)

Transparency builds trust. Here's how we steward our resources to support care, programs, and services for our community.

	2025-2026		2024-2025
REVENUE	\$25,355,343		\$23,269,542
Ontario Health	\$20,087,541	79.2%	\$15,130,917
Ministry of Health	2,851,761	11.2%	3,913,886
City of Toronto	328,440	1.3%	294,677
United Way of Greater Toronto	166,121	0.7%	166,121
Ministry for Seniors and Accessibility	175,760	0.7%	153,411
Right to Food (Formerly Community Food Centres Canada)	160,808	0.6%	129,759
Public Health Agency of Canada	170,000	0.7%	170,000
Health Canada	0	0%	2,106,372
Other	1,262,750	5.0%	1,004,748
Interest & rent	152,162	0.6%	199,651



EXPENSES	\$25,355,343		\$23,269,542
Salaries and employee benefits	\$14,853,254	58.6%	\$14,584,664
Medical supplies, program supplies & sundry expenses	2,614,557	10.3%	3,121,217
Buildings and equipment expenses	1,722,024	6.8%	1,911,784
Contracted out services*	6,165,508	24.3%	3,651,877



* In 25-26, partnership programs funding from Ontario Health (OH) reflected in Contracted-Out Expenses includes:
 \$2,789,329 one-time funding for HART Hub & Housing;
 \$2,379,539 base funding for TO2AN.

Special Purpose Fund

This year South Riverdale Community Health Centre did not fund grant from the Healthy Community Program.

These summarized statements have been extracted from the South Riverdale Community Health Centre's audited financial statements for the year ended March 31, 2026.

Our Donors and Funders

From April 01, 2025 - March 31, 2026

Our work is made possible by the generosity of many.

We are grateful to the donors, partners, and supporters who help bring care and connection to our community.

Donors

Adam Wasserman	Irene C.K. Lee	Nancy Gant
Aki Katsura	Irene Lee	Nathaniel Christou
Allison Buchan-Terrell	Ivi Egalik	Ngoc Quyen Wong
Amir Kazemil	James Bailey	Patricia Carson
Ann Peel	Jasmine Lam	Paul Genest
Ann Phillips	Jayne Caldwell	Perry Caicco
Anna Brooker	Jenna Smith	Peter Duckworth- Pilkington
Anne Simard	Jill Barber	Power Corporation of Canada
Ashley Collier	Joey Wong	Qian Yi Li
Audrey Chan	Judy Dunlap	Ravi Yee Joshi
Bea Cormier	Julie Lee	Robert Guerra
Beth Dixon	Kam Hung-Betrina Leung	Sarah Spence
Bruce Reimer	Kam-Hung Yu	Sima JJ Drugs Limited
Cecile Chan	Katherine Roup	So Ping (Kitty) Chan
Charlotte Weisberg	Kathleen Ko	Stella Yeung
Chris Moore	Keltech Ltd	Sue Peter
Claudia Calabro	Ken Thompson	Sunita Jiwrajka
Daisy Lee	Kristen Yee Joshi	Sylvia Pivko
Danielle Astrug	Kwan Oi Lee	Tahmina Akther
David Walmsley	Leslie Hutchison	Teena Pirrotta
Din Pho	Leslie Middaugh	Tran Ly
Dorian Baldwin	Lilian Yeung	Vanessa Opassinis
Duncan McDonald	Linda Boyko	Veronica Belcastro
Elena Lau Chan	Maria & Giuseppe Pirrotta	Woo Kim
Ella Ip	Mary Kathleen Harrison	Yeun Chu (Winnei) Wu-Jim
Esther Ip	Matthew Bruce	Yingie Sun
Gantavya Khanna	Matthew Jaekel	Yuen Ching (Jane) Chow
Gillian Parker	Maurice Smith	Yuk Ying Tse
Gord & Cathe Vandevalk	Melanie Christou	Zhaoqi Wang
Hasan, Munia		
Hsing Lu Hou		

Key Funders





Our Locations

Care happens in many places. Across our locations, we create welcoming spaces where people can access support, connect with others, and feel they belong.

955 Queen Street East
1245 Danforth Avenue

2 Gower St
 (Harmony Hall Centre for Seniors)

1156 Danforth 2nd floor
 (East Toronto HART Hub)

2-14 The Market Place
 (Harmony Hall Centre for Seniors /
 The Market PI)

688 Coxwell Avenue
 (East Toronto HART Hub)

52 Cataraqui Crescent
 (The Oakridge Hub)

134 Sherbourne Street



South Riverdale
COMMUNITY
 HEALTH CENTRE

416.461.1925
 srhc@srhc.com
srhc.ca

✕ @SRiverdaleCHC
 f South Riverdale Community Health Centre
 @southriverdalechc

